

Deck Floodlights



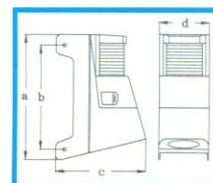
Model 8505

Deck floodlight with special housing combined with masthead lamp **62242**. Application for boats with lengths <12 m. The light distribution has been adapted to the special requirements on smaller sail boats using the FF reflector. The flexible mounting lugs allow simple and quick mounting on any mast profile. With halogen cool-beam reflector lamp (12V/20W) for deck illumination, with cover to protect bulb against damp and dirt. All metal parts stainless steel. Bulb easy to replace through opening in cover (with less guard).

Product description
Bulb.....
Installation

Protective system
Max. output.....

Shock-proof and sturdy plastic
Festoon bulb 12 V / 10 W and insert 12 V / 20 W included
Navigation lamp 2 flat-plug connectors 6.3 mm, deck lamp pre-wired, connection cable 110 mm
According to IPX 4 (DIN 40050)
Deck lamp 12 V / 20 W

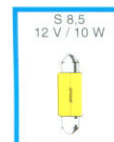


a = 7 1/2"
b = 5 1/4"
c = 2 7/8"
d = 6 1/8"

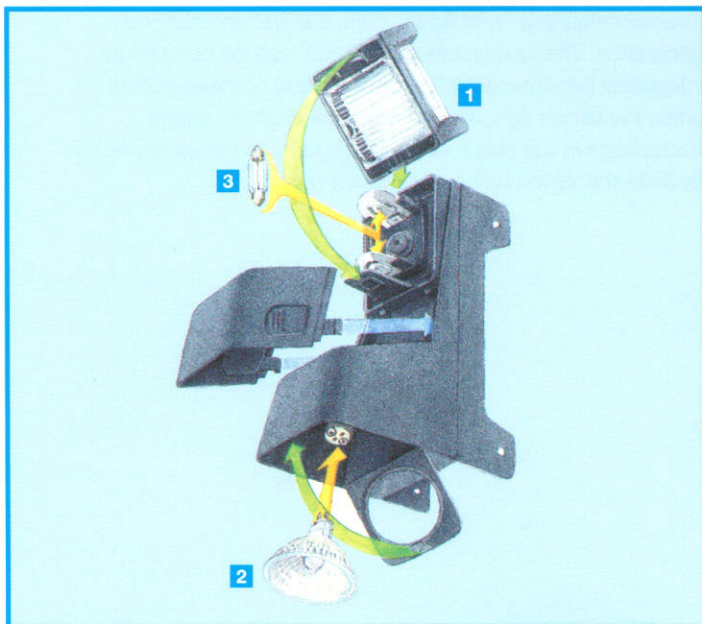
Mast-head/deck combination

☐ 62248 / 62248B

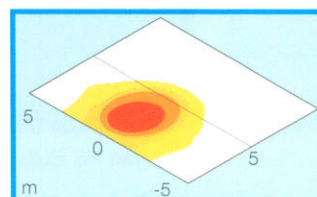
☐ 62348 / 62348B



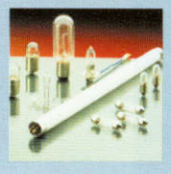
Spare parts



- 1 Lamp housing
- 2 Insert
- 3 Bulb 12V



>1 Lux >5 Lux
>2 Lux >16 Lux



Hella Marine and *Hella* bulbs are quality products from major bulb manufacturers. *Hella Marine* long-life bulbs are a special development from *Hella*, with the objective of significantly reducing failure frequency compared to boat bulbs of earlier design. Halogen bulbs and fluorescent bulbs are the best light source for boats with limited power capacity. In comparison to conventional bulbs they help save energy while providing the same light, or more light consuming the same power with longer service life.

28 V Halogen Bulbs

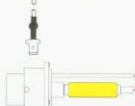
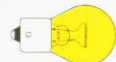
28 V Halogen bulbs have solved the problem of premature failure of 24 V halogen bulbs in 24 V electrical systems. Due to the battery charging voltage, the voltage in the electrical system increases to approx. 28 V while in operation or connected to mains. This affects 24 V halogen bulbs in two ways:

- drastic reduction of service life
- significant lamp overheating

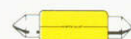
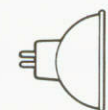
This dangerous lamp overheating is approx 25% for a 24 V halogen bulb at a power consumption of 28 V.

Moreover, the higher the bulb power the greater the sensitivity to vibration.

The service life of a bulb can be increased by providing it with voltage reserves and high capacity.



Xenon



Xenon



	Volt	Watt/cd	Base	DIN-Shape
78290	12	>10/12	BAY 15d	
78292	12	25/30	BAY 15d	
78291	24	>10/12	BAY 15d	
78293	24	25/30	BAY 15d	
78182	12	15	BA 15s	F
78183	12	18	BA 15s	R
78184	24	18	BA 15s	R
78186	12	21	BA 15s	P 21W
78187	24	21	BA 15s	P 21W
78232	12	5	BA 15s	R 5W
73234	24	5	BA 15s	R 5W
78235	12	10	BA 15s	R 10W
78236	24	10	BA 15s	R 10W
78266	12	21/5	BA 15d	P 21/5W
78165	12	20	BA 9s	-
78166	12	5	BA 9s	-
78135	12	55	PK 22s	H 3
78153	12	35	-	-
78145	24	70	PK 22s	H 3
78140	12	100	PK 22s	H 3
78400	12/24	35	P 32d-2	D2S
78242	12	5	G 4	-
78241	12	10	G 4	-
78240	12	20	G 4	-
78243	24	20	G 4	-
78246	24	10	G 4	-
78300	12	20	GX 5,3	
78206	12	10	S 8,5	K
78207	24	10	S 8,5	K
78202	12	10	SV 8,5-8	-
78205	12	5	SV 8,5-8	
78203	12	5	S 8,5	C 5 W
78204	24	5	S 8,5	C 5 W
78223	12	4	BA 9s	T 4 W
78224	24	4	BA 9s	T 4 W
78270	12	1,2	W 2 x 4,6 d	W 5/1,2
78271	24	1,2	W 2 x 4,6 d	W 5/1,2
78274	12	5	W 2 x 4,6 d	W 5/1,2
78275	24	5	W 2 x 4,6 d	W 5/1,2
78185	12	6	BA 9s	
	Licht-strom			
78170	400 Lm	8	G5	
78401	400 Lm	7	2G7	
78402	600 Lm	9	2G7	
78403	900 Lm	11	2G7	